

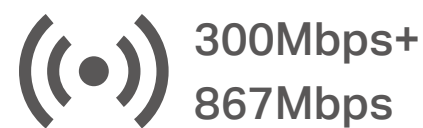


# RE305 AC1200 Wi-Fi Range Extender

High-Speed Dual Band  
Wi-Fi Extension



RE305



Intelligent Signal  
Indicator Light



Access  
Point Mode

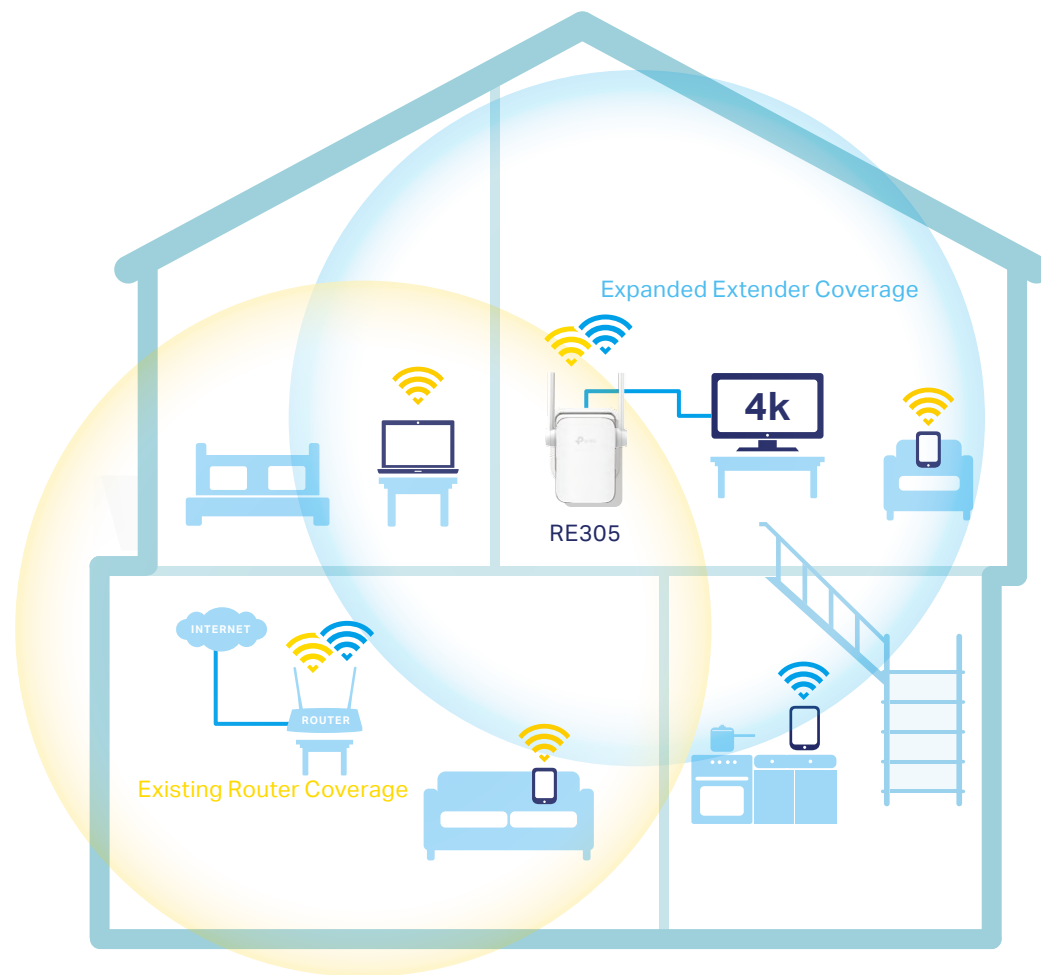


Tether  
App

# Highlights

## Extend Dual Band AC1200 for the Whole Home

The AC1200 Wi-Fi Range Extender connects to your router wirelessly, strengthening and expanding its signal into areas it can't reach on its own, achieving speeds of 300Mbps on the 2.4GHz band and 867Mbps on the 5GHz band.

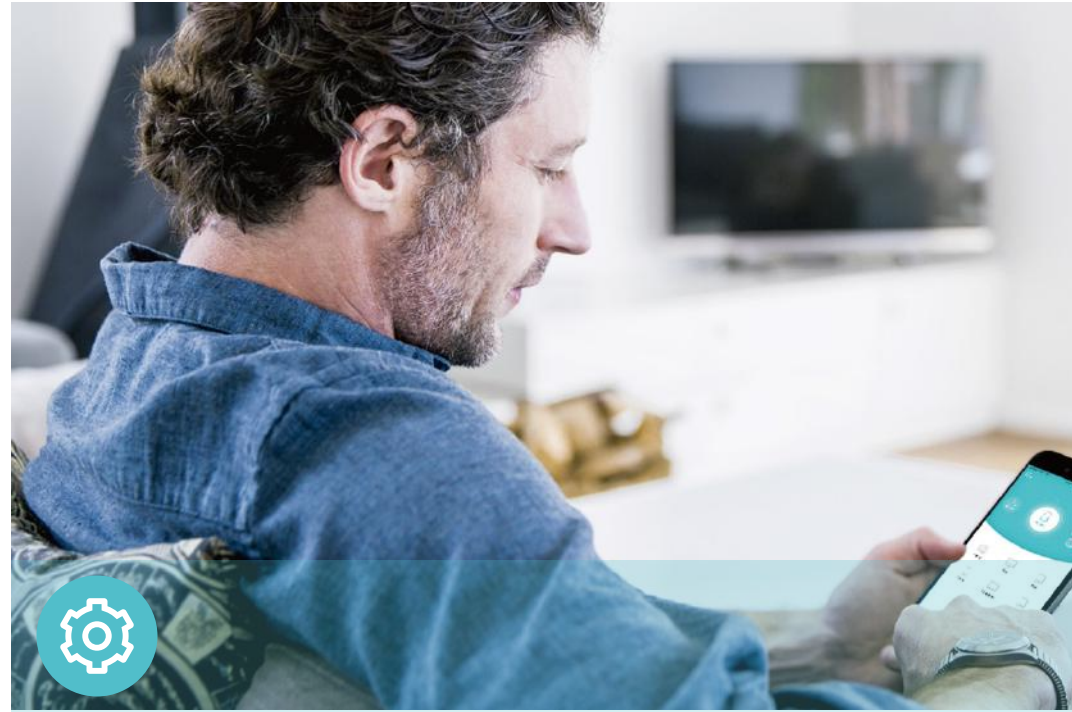


## Perfect Location at a Glimpse

An Intelligent Signal light helps you quickly find the best location to install the range extender.



# Features



## Ease of Use

- Intuitive Web UI– Ensures quick and simple installation without hassle
- Fast Encryption – One-touch WPA wireless security encryption with the WPS button
- Hassle-free Management with Tether App – Network management is made easy with the TP-Link Tether App, available on any Android or iOS device



## Speed

- Ultimate Wireless Speed – Combined wireless speeds of up to 300Mbps (over 2.4GHz) and 867Mbps (over 5GHz)
- Support 802.11 ac – Provides a data transfer rate 3 times faster than 802.11n for each stream



## Reliability

- Simultaneous Dual Band – Separate Wi-Fi bands enable more devices to connect to your network without a drop in performance
- Reliable Connection – Two adjustable external antennas for optimal Wi-Fi coverage and reliable wireless connections

# Specifications

## Hardware

- Ethernet Port: 1 10/100Mbps RJ45 Port
- Button: WPS Button, Reset Button
- Antenna: 2 External Antennas
- Power Consumption: 7.3W
- Dimensions (L × W × H): 80×78×77mm



## Wireless

- Wireless Standards: IEEE 802.11a/n/ac 5GHz, IEEE 802.11b/g/n 2.4GHz
- Frequency: 2.4GHz and 5GHz
- Signal Rate: 300Mbps at 2.4GHz, 867Mbps at 5GHz
- Transmit Power: ≤17dBm(2.4GHz), ≤17dBm(5GHz)
- Reception Sensitivity:
  - 5GHz:
    - 11a 6Mbps: -91dBm, 11a 54Mbps: -74dBm
    - 11ac HT20: -68dBm, 11ac HT40: -63dBm
    - 11ac HT80: -59dBm
  - 2.4GHz:
    - 11g 54Mbps: -79dBm, 11n HT20: -77dBm
    - 11n HT40: -74dBm
- Wireless Function: Enable/Disable Wireless Radio, Wireless Statistics
- Wireless Security: 64/128-bit WEP, WPA/WPA2, WPA/WPA-PSK2 encryptions

## Others

- Certification  
CE, FCC, RoHS
- System Requirements  
Microsoft Windows 98SE, NT, 2000, XP, Vista™ or Windows 7, 8, 8.1, 10, MAC OS, NetWare, UNIX or Linux  
Internet Explorer 11, Firefox 12.0, Chrome 20.0, Safari 4.0, or other Java-enabled browser
- Package Contents  
AC1200 Wi-Fi Range Extender RE305  
Quick Installation Guide



For more information, please visit

<http://www.tp-link.com/en/products/details/RE305.html>

or scan the QR code left

Specifications are subject to change without notice. TP-Link is a registered trademark of TP-Link Technologies CO., Ltd. Other brands and product names are trademarks or registered trademarks of their respective holders.

Maximum wireless speed of up to 1200Mbps is the theoretical data rate derived from IEEE standard 802.11 specifications. Actual data throughput and wireless coverage will vary due to network conditions and environmental factors including volume of network traffic, building materials and construction, network overhead, actual data throughput rate, and wireless coverage. TP-Link makes no express or implied representations or warranties about this product's compatibility with any future standards. 802.11ac 1300Mbps is approximately 3 times faster than 802.11n 450Mbps. 2.4GHz Performance Mode requires 256 QAM support on Wi-Fi client.

[www.tp-link.com](http://www.tp-link.com)

TP-Link AC1200 Wi-Fi Range Extender RE305