





AC750 Wi-Fi Range Extender

Stable Dual Band Wi-Fi Extension



RE205

 300Mbps+
433Mbps

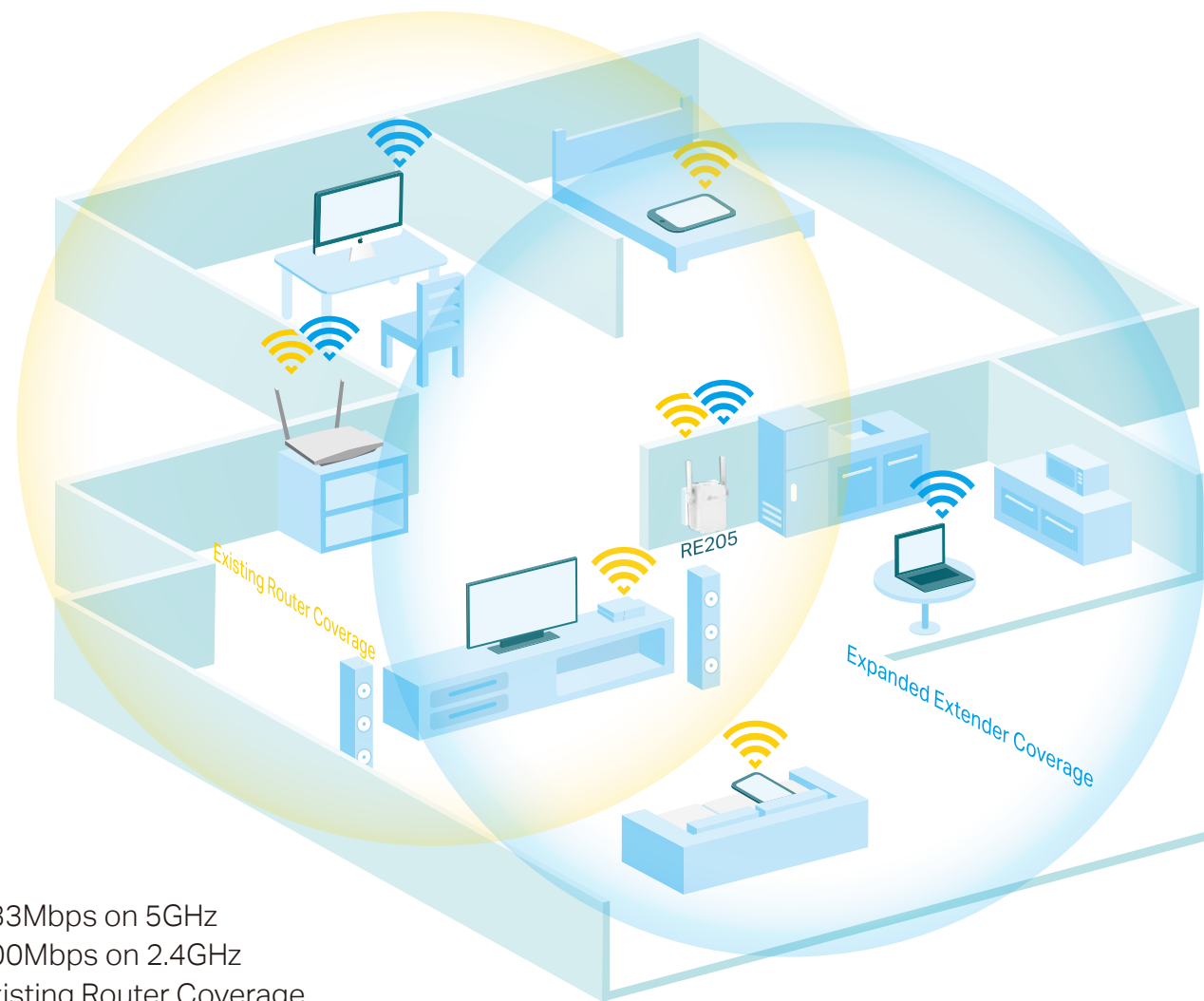
 Access
Point Mode

 Tether
App

Highlights

Extend the Range of Your Wi-Fi Network

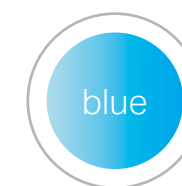
The AC750 Wi-Fi Range Extender connects to your router wirelessly, strengthening and expanding its signal into areas it can't reach on its own, achieving speeds of 300Mbps on the 2.4GHz band and 433Mbps on the 5GHz band.



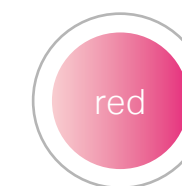
- 433Mbps on 5GHz
- 300Mbps on 2.4GHz
- Existing Router Coverage
- Expanded Extender Coverage

Perfect Location at a Glimpse

An Intelligent Signal light helps you quickly find the best location to place the range extender.

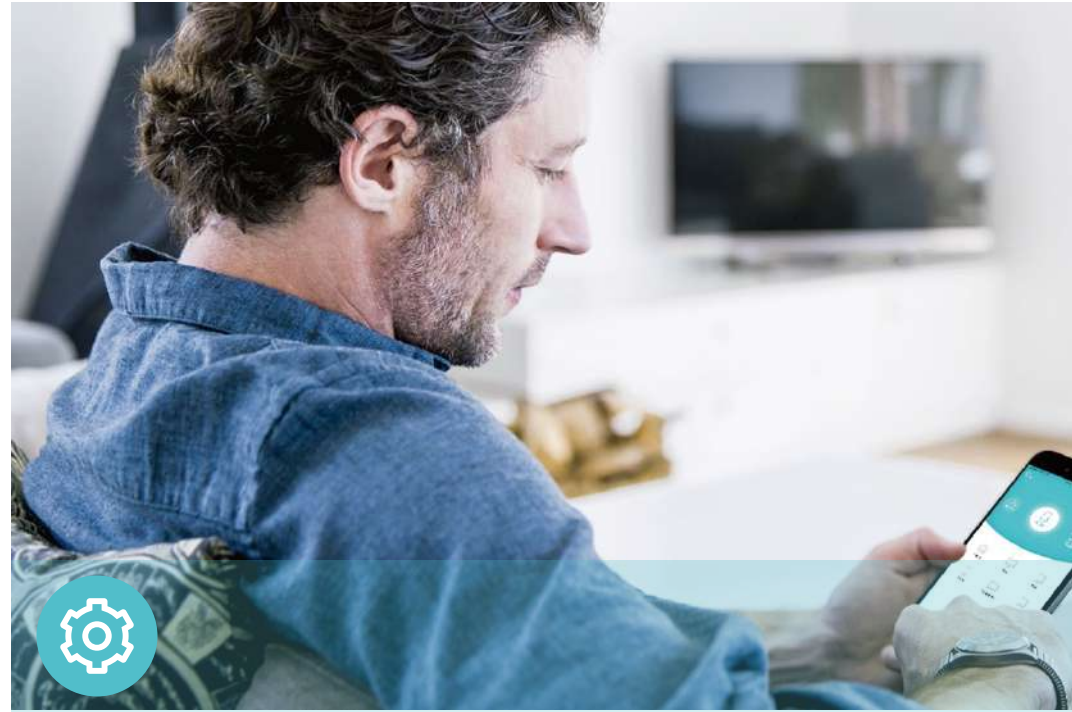


Good connection



Too far away from the router

Features



Ease of Use

- Intuitive Web UI – Ensures quick and simple installation without hassle
- Fast Encryption – One-touch WPA wireless security encryption with the WPS button
- Hassle-free Management with Tether App – Network management is made easy with the TP-Link Tether App, available on any Android or iOS device
- Online Upgrade – Keeps you informed of the latest firmware and allows onling updating on the web UI



Speed

- Ultimate Wireless Speed – Combined wireless speeds of up to 300Mbps (over 2.4GHz) and 433Mbps (over 5GHz)
- Support 802.11 ac – Provides a data transfer rate 3 times faster than 802.11n for each stream



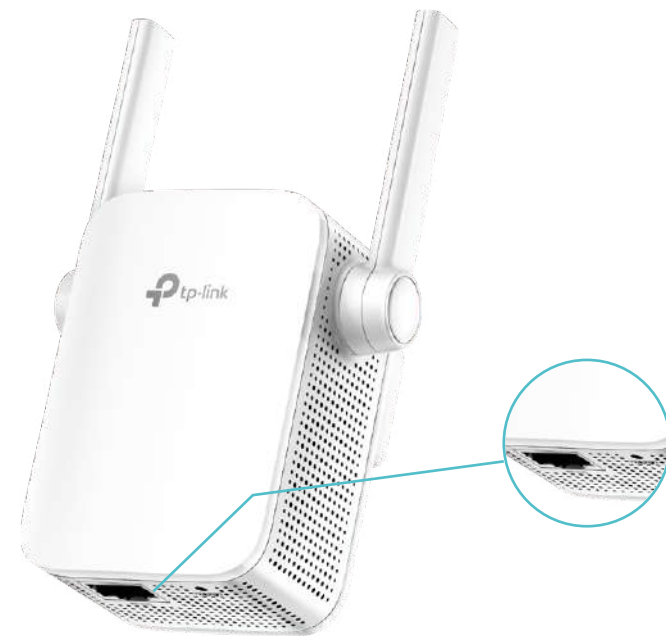
Reliability

- Simultaneous Dual Band – Separate Wi-Fi bands enable more devices to connect to your network without a drop in performance
- Reliable Connection – Two adjustable external antennas for optimal Wi-Fi coverage and reliable wireless connections

Specifications

Hardware

- Ethernet Port: 1 10/100Mbps RJ45 Port
- Button: WPS Button, RESET Button
- Antenna: 2 External Antennas
- Power Consumption: 6.5W
- Dimensions (L × W × H): 80×78×77mm



Wireless

- Wireless Standards: IEEE 802.11a/n/ac 5GHz, IEEE 802.11b/g/n 2.4GHz
- Frequency: 2.4GHz and 5GHz
- Signal Rate: 300Mbps at 2.4GHz, 433Mbps at 5GHz
- Transmit Power: ≤15dBm(2.4GHz), ≤19.5dBm(5GHz)
- Reception Sensitivity:
 - 5GHz:
 - 11a 6Mbps: -94dBm, 11a 54Mbps: -77dBm
 - 11ac HT20: -69dBm, 11ac HT40: -66dBm
 - 11ac HT80: -63dBm
 - 2.4GHz:
 - 11g 54Mbps: -79dBm, 11n HT20: -77dBm
 - 11n HT40: -74dBm
- Wireless Function: Enable/Disable Wireless Radio
- Wireless Security: WEP, WPA/WPA2, WPA/WPA-PSK2 encryptions, Enable/Disable SSID Broadcast

Others

- Certification
CE, FCC, RoHS
- System Requirements
Microsoft Windows 98SE, NT, 2000, XP, Vista™ or Windows 7, 8, 8.1, 10, MAC OS, NetWare, UNIX or Linux
Internet Explorer 11, Firefox 12.0, Chrome 20.0, Safari 4.0, or other Java-enabled browser
- Package Contents
AC750 Wi-Fi Range Extender RE205
Quick Installation Guide



For more information, please visit

<http://www.tp-link.com/en/products/details/RE205.html>

or scan the QR code left

Attention: This device may only be used indoors in all EU member states and EFTA countries.

Specifications are subject to change without notice. TP-Link is a registered trademark of TP-Link Technologies Co., Ltd. Other brands and product names are trademarks or registered trademarks of their respective holders. Copyright ©2017 TP-Link Technologies Co., Ltd. All rights reserved.

TP-Link Technologies Co., Ltd.

Building 24 (floors 1, 3, 4, 5) and 28 (floors 1-4) Central Science and Technology Park, Shennan Rd, Nanshan, Shenzhen, China
www.tp-link.com

www.tp-link.com

TP-Link AC750 Wi-Fi Range Extender RE205