

Controller

Hardware Controller: OC200 V2 / OC300

Software Controller



Omada SDN Controller



OC200 V2



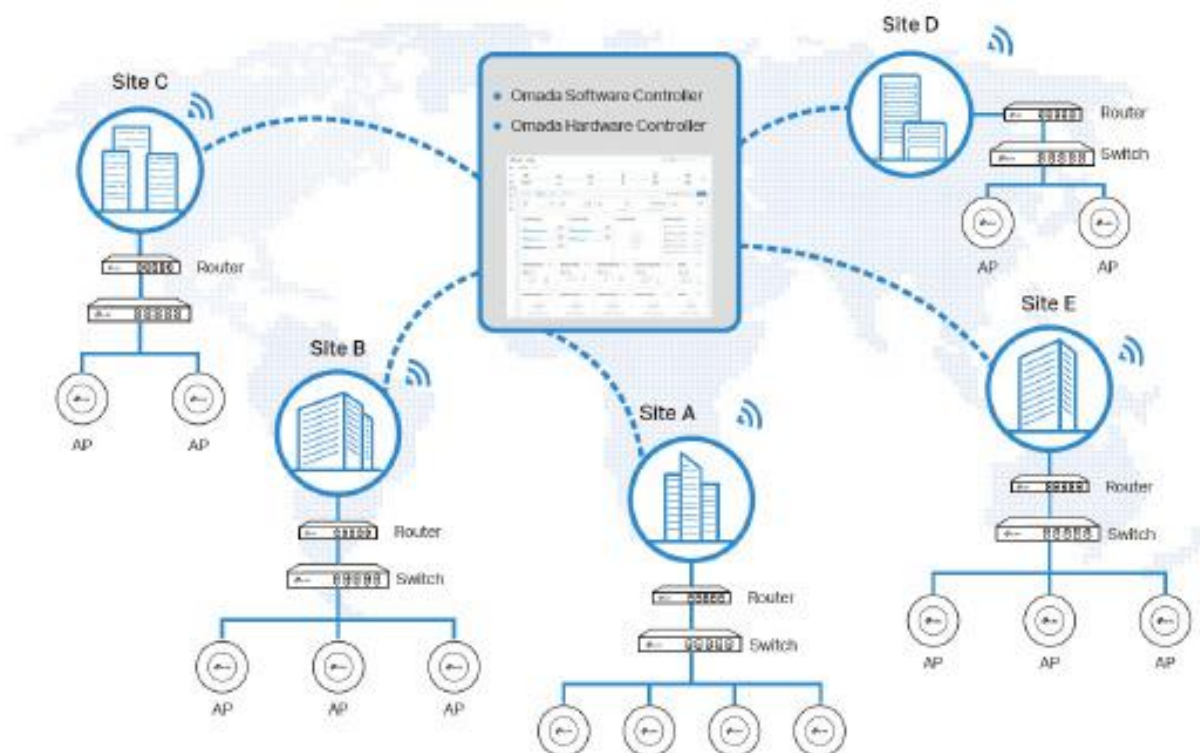
OC300

Omada Solution

				
Hospitality High Quality and Full Coverage Wi-Fi	Education High-Density Wi-Fi	Retail Social Marketing for O2O	Office Wireless and Wired Connections	Catering Full Wi-Fi Coverage in High-Density Environment

Software Defined Networking (SDN) with Cloud Access

Omada Software Defined Networking (SDN) platform integrates network devices, including access points, switches and gateways, providing 100% centralized cloud management. Omada creates a highly scalable network—all controlled from a single interface. Seamless wireless and wired connections are provided, ideal for use in hospitality, education, retail, offices, and more.



Hassle-Free Centralized Cloud Management

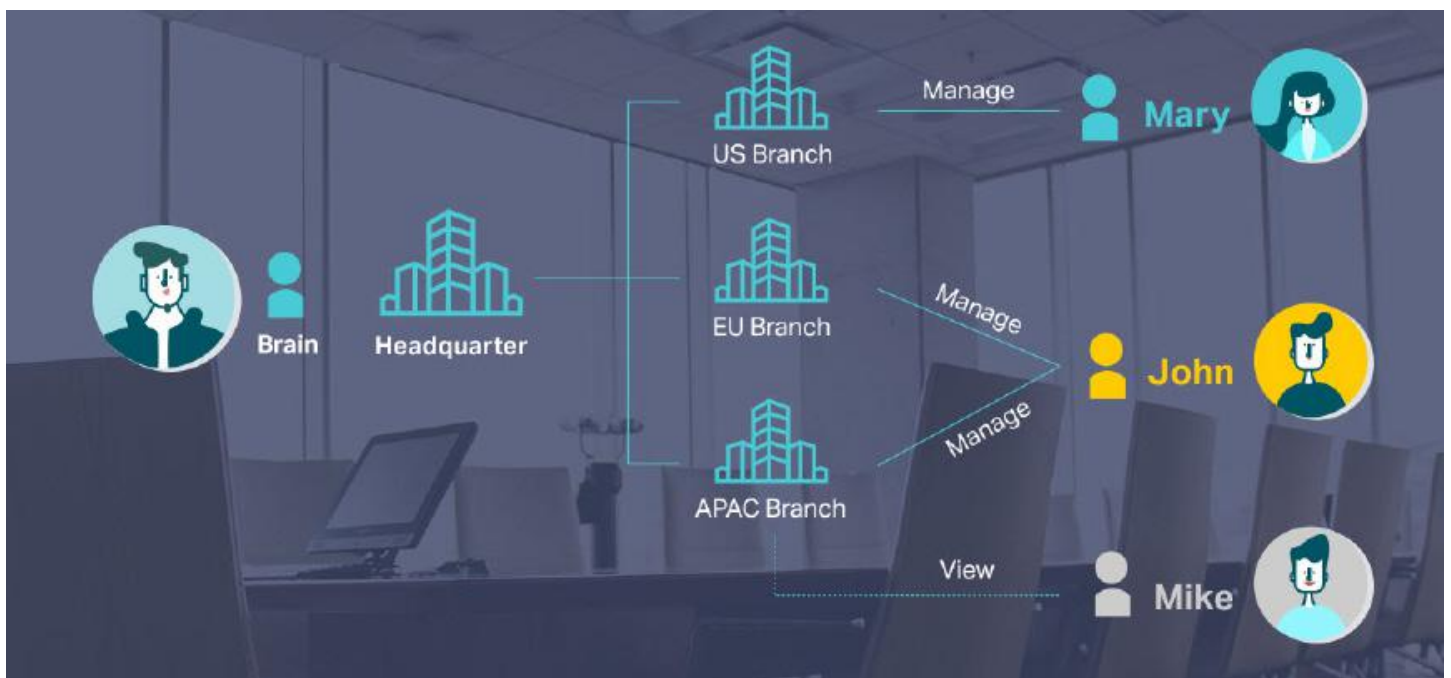
100% centralized cloud management of the whole network from different sites—all controlled from a single interface anywhere, anytime.



- ✓ No additional training needed
- ✓ Unlimited scalability
- ✓ Batch management
- ✓ Devices still work even when not connected to the Cloud

Assign Different Management Roles

Multi-user privilege assignment is available to increase management efficiency and security. Multi-person management, multi-level permissions, and the ability to add admins as needed, enable flexible network operation and maintenance.

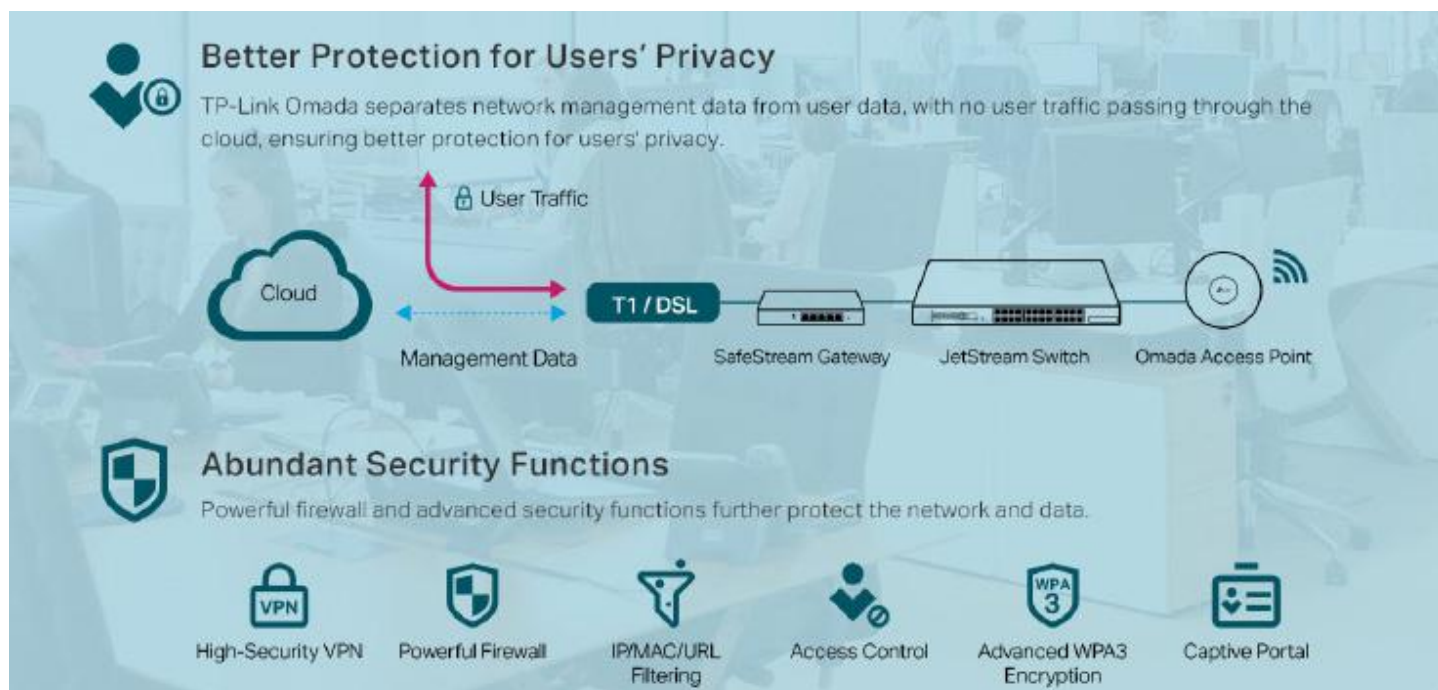


Easy and Intelligent Network Monitoring

The easy-to-use dashboard makes it easy to see your real-time network status; check network usage and traffic distribution; receive network condition logs, abnormal event warnings, and notifications; or even track key data for better business results. Network topology helps administrators quickly see and troubleshoot connection at a glance.



Comprehensive Protection for the Whole Network



Specifications

Controller Type		Hardware Controller		Software Controller
Model		OC200 V2	OC300	-
Main Design	Processor	Dual-Core A53 @ 1.2 GHz	Quad-Core A72 @ 1.2 GHz	-
	Memory Information	1 GB DDR3	2 GB DDR4	-
	Storage	1MB Nor Flash; 4 GB eMMC	2MB Nor Flash; 8 GB eMMC	-
	RJ45 Port	2 10/100 Mbps Ethernet Ports	2 10/100/1000 Mbps Ethernet Ports	-
	USB Port	1 USB 2.0 Port; 1 Micro-USB Port	1 USB 3.0 Port	-
	Interface	1 Kensington Lock; 1 Reset		-
Hardware Design	Power Supply	802.3af/at PoE; Micro-USB (DC 5 V/ Minimum 1 A)	100-240 V ~ 50/60 Hz AC	-
	Max Power Consumption	11.3 W (powered by a PoE device, with USB 2.0 connected); 4.3 W (powered via Micro-USB port, no USB 2.0 connected)	9.0 W (no USB 3.0 connected); 14.8 W (with USB 3.0 connected)	-
	Dimensions	3.9 × 3.9 × 1.0 in (100 × 98 × 25 mm)	11.6 × 7.1 × 1.7 in (294 × 180 × 44 mm)	-
System Management	Multi-Site Management	√		
	Multi-tenant Management (Role/Site/Device Privileges)	√		
	Cloud Access	√		
	Migration (Site Migration/Controller Migration)	√		
	Account Management	√		
	Maximum Number of Sites	100		1000
	Maximum Number of Accounts	1000		
	Maximum Number of Local Accounts	500		
	Maximum Number of Cloud Accounts	500		
	Maximum Number of Vouchers	50,000		
	Maximum Number of Local Users	50,000		
	Maximum Number of WLAN Groups	500		5000
	Maximum Number of SSIDs	16 in each site		
	Maximum Number of ACL	Router: 64 Switch: 32* EAP: 16		
	Maximum Number of Free Authentication	32 in each site		
	Maximum Number of Pre-Authentication Access	32 in each site		
	Maximum Number of Authentication Free Policy	96 in each site		
	Maximum Number of Reboot Schedule	8 in each site		
	Maximum Number of PoE Schedule	8 in each site		
	Maximum Number of MAC Filter Groups	8 in each site		
	Maximum Number of MAC Addresses in Each MAC Filter Group	500 (4,000 in total per controller)		
	Maximum Number of VPN	64 in each site		
	Maximum Number of Static Routing	64 in each site		
	Maximum Number of Policy Routing	64 in each site		
Backup & Restore	√			
Auto Backup	√			
Customized UI Interface	√			

* The actual number of ACL depends on the configuration and it may be less than 32.

Controller Type		Hardware Controller		Software Controller
Model		OC200 V2	OC300	-
Network Management	Wired Network		√	
	Wireless Network		√	
	Network Security (ACL/URL Filtering/Attack Defense)		√	
	Transmission (Routing/NAT/Session Limit/Bandwidth Control)		√	
	VPN (IPSec/L2TP/PPTP/OpenVPN)		√	
	Portal (Voucher/Local User/SMS/RADIUS/Facebook/ External Portal Server)		√	
	802.1x		√	
	RADIUS (Authentication/MAC Auth/Accounting)		√	
Device Management	Management Device Type	Omada EAP, JetStream Switch*, Omada Router*		
	Management Scale**	≤ 10 Routers+ 20 Switches+100 EAPs ≤ 1,000 Clients	≤ 100 Routers+ 100 Switches+500 EAPs ≤ 15,000 Clients	≤ 1,500 Devices***
	Device Automatic Discovery		√	
	Batch configuration		√	
	Online upgrade		√	
	Reboot Schedule		√	
	PoE Schedule		√	
	WLAN Scheduler		√	
	DDNS		√	
	SNMP		√	
	SSH		√	
Monitoring	Dashboard (Custom Dashboard)		√	
	Statistics (Performance/Switch Stats/Speed Test Stats)		√	
	Network topology		√	
	Network Map		√	
	Devices List (Custom Table)		√	
	Clients List (Custom Table)		√	
	Insights (Known Clients/Past Connections/Past Portal Authorizations/Rogue APs)		√	
	Logs (Alerts/Events/Custom Notifications)		√	
Others	Certifications	CE, FCC, RoHS		-
	Operating Temperature	0 °C–40 °C (32 °F–104 °F)	0 °C–50 °C (32 °F–122 °F)	-
	Storage Temperature	-40 °C–70 °C (-40 °F–158 °F)		-
	Operating Humidity	10%–90% non-condensing		-
	Storage Humidity	5%–90% non-condensing		-

*Some models are manageable, please refer to the TP-Link official website for more information.

**The actual management scale will vary as a result of network environment, bandwidth and different settings.

***Omada Software Controller can manage up to 1500 EAPs if the Controller Host has enough hardware resources. To guarantee operational stability for managing 1500 EAPs, we recommend that you use the hardware which meets or exceeds the following specifications:

-CPU: Intel Core i3-8100, i5-6500, or i7-4700 with 2 or more cores and 4 or more threads.

-Memory: 6 GB RAM or more.